

About Us

AMBULANC (SHENZHEN) TECH. CO., LTD was established in 2001 by emergency care experts and is dedicated to innovating and developing life support total solutions and manufacturing a range of critical care devices for respiratory therapy, CPR, defibrillation, etc.

We own with 30+ CFDA medical registration certificates, 400+ patents, including over 130+ domestic invention patents and a number of international PCT invention patents.

We have served more than 20,000 valued customers from over 100 countries around the world. Amoul® has set up a sound distribution and services network in Europe, Middle East, Asia, Africa, Latin, America and established branch offices in Poland, India, and Indonesia.



Automated External Defibrillator

Can save a life when a heart arrest happen



📍 Saif Zone, Sharjah - United Arab Emirates

☎ +971 6 557 9818

✉ info@maria-trading.com

www.maria-trading.com

[f](#) [x](#) [@](#) [v](#) [i](#) [d](#) [/mariatradingco](#)

www.maria-trading.com



Every year, sudden cardiac arrest (SCA) strikes plenty of people around the world. Each day millions of people are affected by SCA outside hospitals and only 10% victims survive. If automated external defibrillation and CPR can be provided before emergency services arrive immediately, the survival rate can increase to 50%.



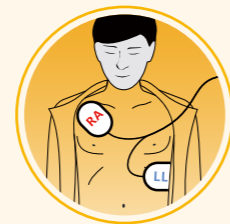
Amoul® semi-Automated External Defibrillator is a portable public access medical device to treat people experiencing sudden cardiac arrest. It can diagnose cardiac arrhythmias and provide biphasic truncated exponential waveform shock. The three-step foolproof operation guide leads the user through the rescue and defibrillation treatment in accordance with the AHA/ERC guidelines.



CE ISO



1. Turn ON



2. Apply pads



3. Follow the instructions and deliver a shock



Features



Real-time battery status



Detailed instructions, picture guidance, and real-time CPR guidance



Smart biphasic truncated exponential shock waveform



Universal electrode pads for both adult/child (optional)



Up to 1000 events ECG data storage for 24 hours



Remotely device management with AED Management Platform (Optional)



7" HD LCD Screen (i5 Only)



Portable, Weight only 2.3 kg



AED i3

- Smart ECG analysis
- Wireless data transmission
- Remote AED management platform
- Real-time AED & CPR visual & voice guidance
- Adult/Pediatric electrode pads
- Deliver a 200J shock to adults and 50J shock to pediatrics
- IP54 Dustproof & Waterproof
- Long-life disposable battery up to 5 years



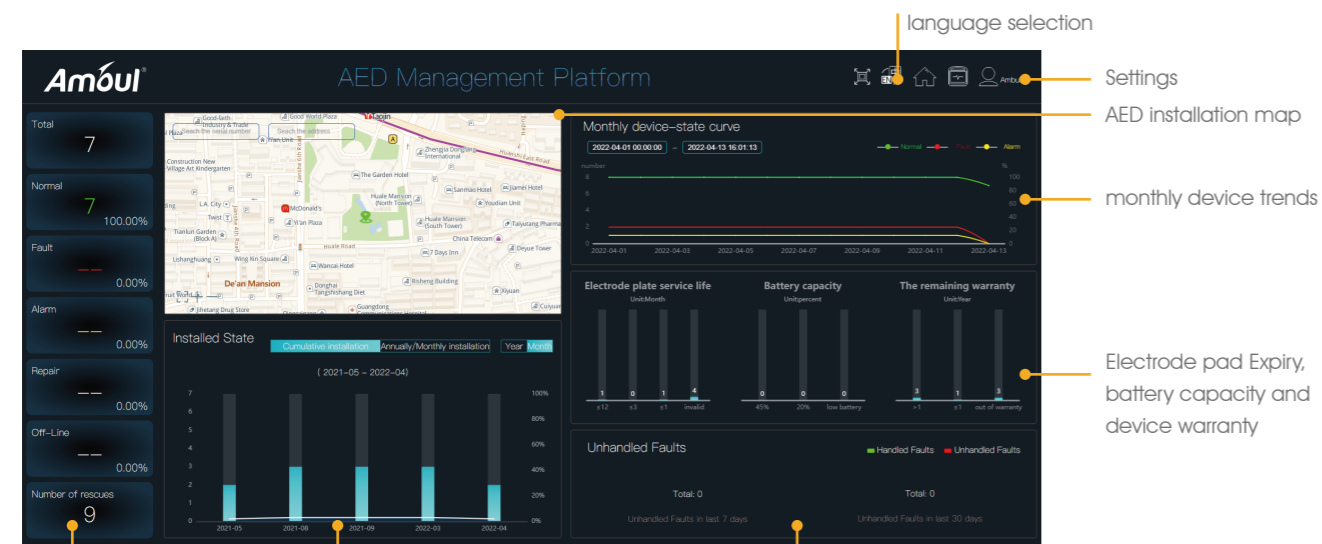
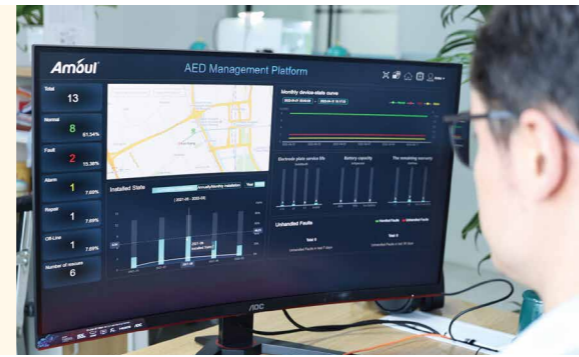
AED i5

- 7"HD LCD Screen
- Visualized status of battery and system
- Remotely management platform
- GPS for showing the location
- Detailed visible & audible defibrillation guidance
- Up to 1000 events ECG data storage for 24 hours
- Applicable to adults and children
- High capacity battery provides up to 200 shocks
- Optional rechargeable battery

AED Management Platform

Intelligent AED management platform is a comprehensive solution to manage AED remotely . It provides realtime information about:

- AED status
- AED battery status
- AED Location
- Daily reporting
- Cardiac Arrest Event Data ...



Overview including Self test status, on-line, off-line status 4G connection status

Device installation amount monthly or annually

Total number of AEDs with unhandled faults in last 7 & 30 days

Easy maintenance

i3 and i5 AED automatically performs a self-test each time you power ON, and it may also perform a routine self-test daily, weekly, or monthly.

| | Auto self-test | Inspections | Replace pads | Check the expiration date of the pads | Check the expiration date of the battery | Cleaning and disinfection |
|-----------|----------------|-------------|--------------|---------------------------------------|--|---------------------------|
| Weekly | ✓ | | | | | |
| Monthly | ✓ | ✓ | | ✓ | ✓ | |
| After use | | ✓ | ✓ | | | ✓ |

Scenarios



Gym or fitness center



Bus stop



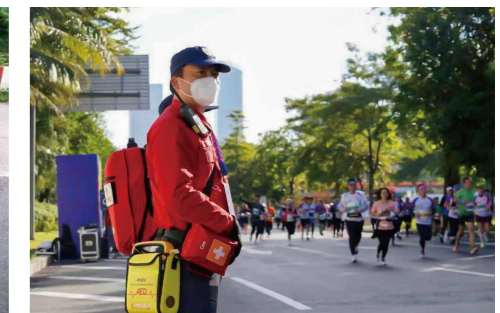
Workplace



Subway

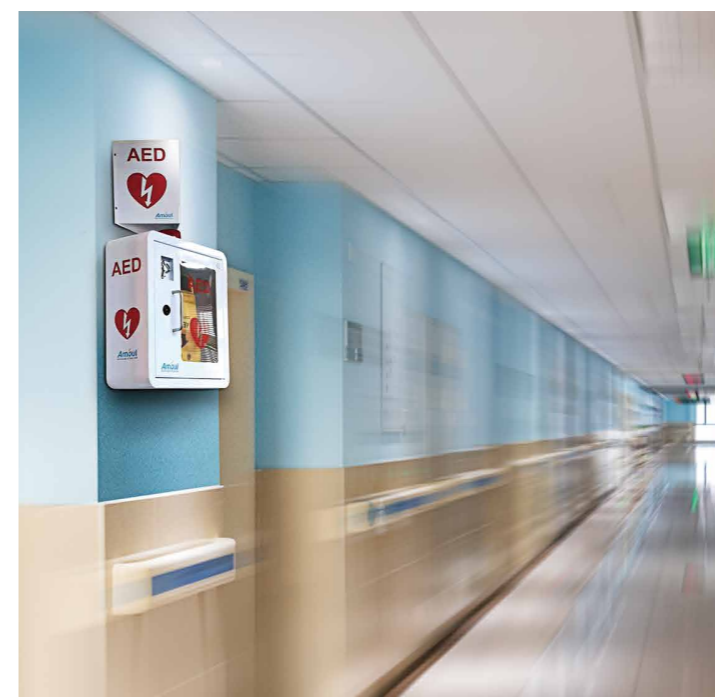


EMS



Sports Events

AED cabinet



wall cabinet



vertical cabinet